

PINKOSKI.COM

Main Menu

- Home
- Banking Solution
- The Real Mt. Sinai
- Red Sea Crossing
- Sodom & Gomorrah
- Ark of the Covenant 1
 - Ark of the Covenant 2
 - AoC Flyer
- Noah's Ark
- Pyramid Machine

Red Sea Crossing Site

I realize that this is a bold statement,
but we have the PROOF:

The Red Sea Crossing

HAS BEEN FOUND!!!

Wyatt Museums 1

Museum #1 Closes
Museum #2
Museum #3
Future Plans

Ron Wyatt

Newspaper Articles
Ron Wyatt's Funeral
A Serious Message

About Jim, Part 1

About Jim 2
About Jim 3
About Jim 4
About Jim 5
About Jim 6
My Movie Idea
Star Wars
Star Trek

Harry Anderson

Carl Sagan

Sandra's Page

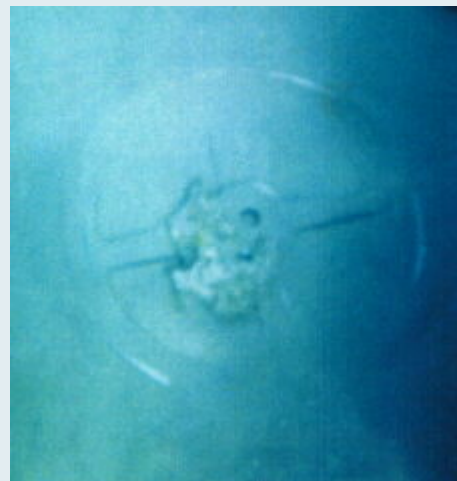
10 Commandments

News & Views

Contact Us

John Berkey Artwork

Berkey Art Gallery

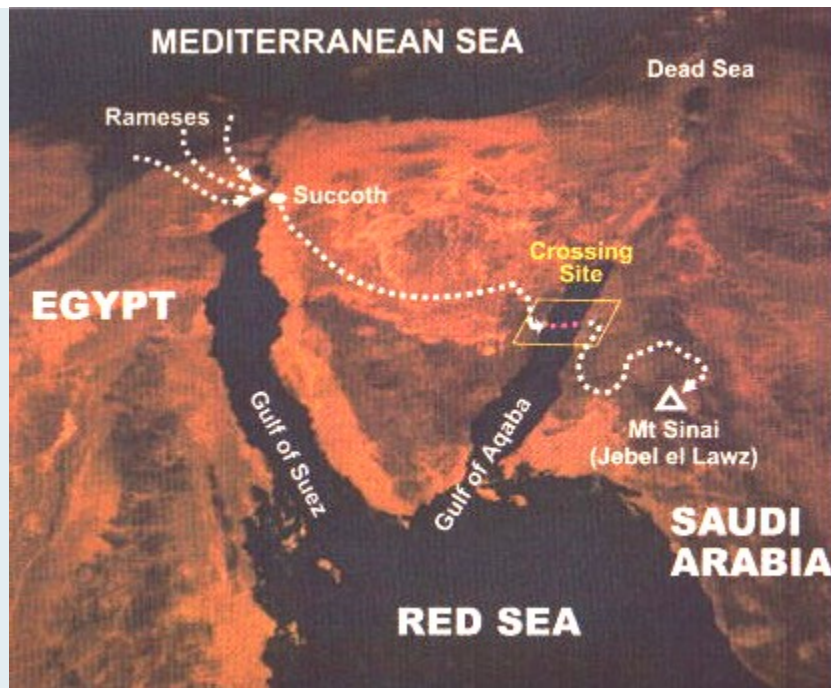


Coral-covered chariot wheels have been found in the Gulf of Aqaba !!!



Coral-covered human bones have also been found !!!

ABOVE: The bone on the left is a normal human femur, and the bone on the RIGHT is a human leg bone from the crossing site!



Ron Wyatt's crossing site extends from the beach at Nuweiba!

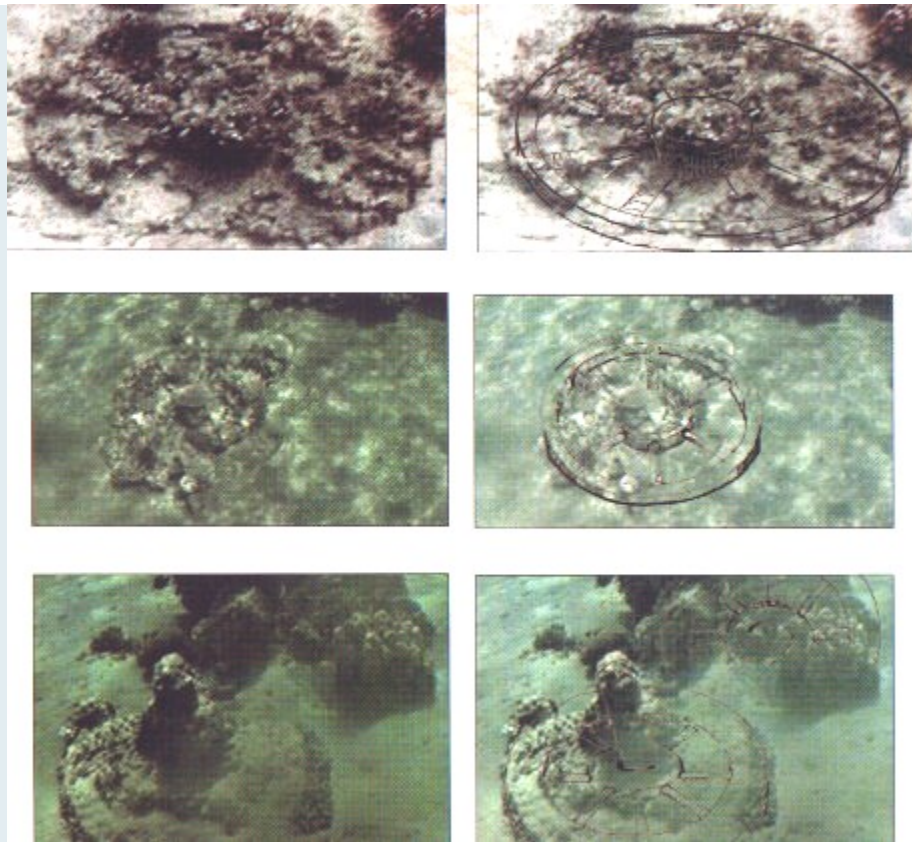




ABOVE: Ron Wyatt's crossing site is located in the Gulf of Aqaba. There is only ONE PLACE along the west coast of the Gulf of Aqaba that is big enough to hold 1-2 million people, and that is the beach at Nuweiba which is large enough to clearly be seen from outer space. When Ron went scuba diving at this location, he located a natural underwater landbridge that crossed the gulf and ***coral-covered chariot wheels*** and ***coral-covered skeletons!***

Coral-Covered Chariot Wheels!

BELOW: Three coral-covered chariot wheels (*untouched photos on left, diagrams on right*)



This is the ***very first time in human history*** that anyone has ever found the physical evidence to prove that the Exodus really happened! NO ONE ELSE HAS EVER FOUND CORAL-COVERED CHARIOT WHEELS IN ANY PORTION OF THE RED SEA UNTIL NOW!

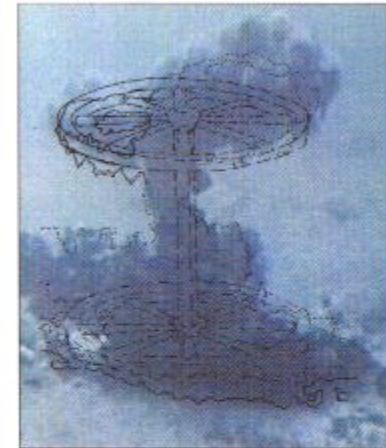
BELOW: My 1994 picture of Ron Wyatt next to his Red Sea crossing display in the old Gatlinburg museum.



A Chariot Wheel on an Axle!

BELOW: A portion of page 212 from Lennart Moller's book "THE EXODUS CASE" showing a scuba diver investigating coral-covered objects in the Gulf of Aqaba, and one of our most stunning discoveries: A chariot wheel on an upright axle!!

In figure 393 it seems as though a whole chariot is lying on its side. It might be a war chariot but it could also be a transport chariot. Towards the back a circular shape can be seen, which might very well be a wheel. In the front part, a probable axle can be seen standing straight up with



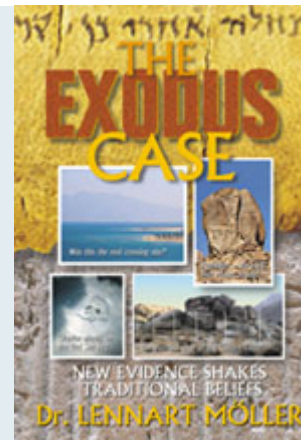
Figures 383, 384: This is probably two wheels that stand up, resting on one of the wheels with an intact axle at a 90 degree angle, which connect the two wheels.

Figures 385, 386: Two wheels (coloured pink) in a pile of objects that will be discussed later. These are six-spoked wheels. Note the similarity of the right wheel and the illustration made before the discovery of these wheels, and based on a general understanding of Egyptian wheel construction.



212

Lennart Moller's "THE EXODUS CASE" is an excellent 320-page hardcover book that has been published in Sweden -- it is now available from a distributor in the USA at www.newworldpublishers.com/exodus/ for \$29.95



The Matching Pillars

BELOW: Ron said that there were matching pillars on both sides of the crossing site, and that these pillars were put here by King Solomon to commemorate the crossing site. This is the one on the Egyptian side -- (***the one on the Saudi side, as you can see in Ron's videos, has been removed and a marker has been put in its place***). This striking photo of Ron and the commemorative pillar on the beach at Nuweiba were taken by Mike Haas who went along on Ron's 1997 fall tour trip . . .



BELOW: This is a close up of one of Ron Wyatt's crossing site displays that shows how the waters closed up and drowned Pharaoh's army.



UPDATE: New tests done!

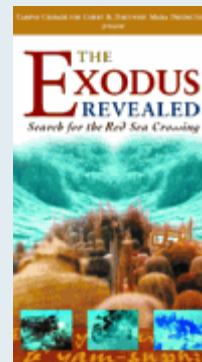
There have been some "controversies" about the depth of the underwater landbridge that extends across the Gulf of Aqaba from the beach at Nuweiba -- and in May of 2000 a group from Australia and New Zealand went to the site and did extensive testing using Simrad CE32 Chart Plotter plus GPS to carry out depth soundings. It seems that the British Admiralty maps are inaccurate and unreliable -- our new tests matched the results of the Israeli Marine Geology Mapping & Tectonics Division. The Israelis report, "There IS a land bridge off Nuweiba" -- but we must remember that the Exodus happened over 3,400 years ago, and the underwater landbridge will have eroded and deteriorated over the years.

See an Update about this discovery on www.anchorstone.com/wyatt/redsea_update02a.html and see the new depth printout at www.anchorstone.com/wyatt/satellite.jpg

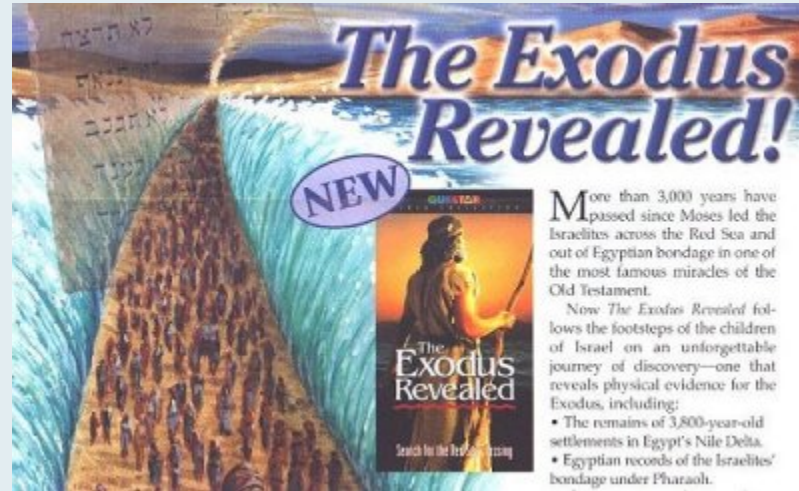


"The Exodus Revealed" Video!

BELOW: This is an *excellent* video presentation documenting Lennart Moller's investigation of the coral-covered chariot wheels and bones that have been found in the Gulf of Aqaba! Order from this website: <http://goccc.com/exrevvid.html>



BELOW: "The Exodus Revealed" video is also being advertised by THE FRIENDS OF ISRAEL organization as of January 2002 --



Several more samples of coral-covered chariot wheels have been found and photographed, and these other photos are located on these other websites:

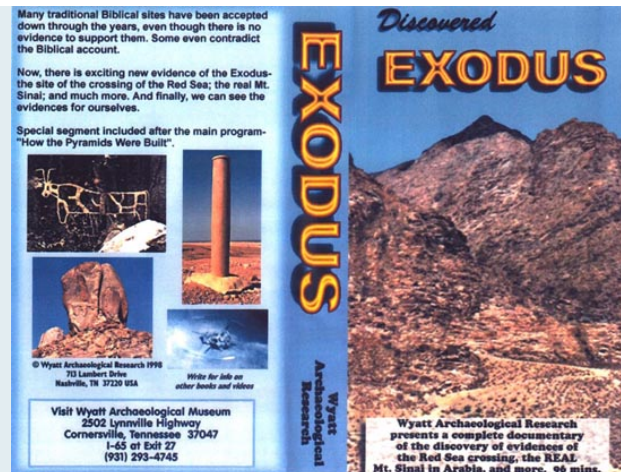
<http://www.wyattmuseum.com/>

<http://www.anchorstone.com/>

<http://www.arkdiscovery.com/>

* * *

Order Ron Wyatt's EXODUS Video Today!



Ron Wyatt's 96-minute video is available for \$30 from WYATT ARCHAEOLOGICAL RESEARCH. Contact their museum at 1-931-293-4745 or call toll free 1-877-992-8865!

(c) 2000-2009 Jim Pinkoski. Jim's photos and text are the protected private property of Jim Pinkoski. It is offered freely for your review on this web site, however, any reproduction of further use of any text or images contained in this material must be done only with prior written consent of Jim Pinkoski.



RocketTheme

© Copyright 2008, All Rights Reserved