

[Home](#)

[Discoveries](#)

[The Real Mt. Sinai](#)

[Red Sea Crossing](#)

[Sodom & Gomorrah](#)

[Ark of the Covenant](#)

[AoC Flyer](#)

[Pyramid Machine](#)

[Noah's Ark](#)

[Wyatt Museums](#)

[Museum #2](#)

[Museum #3](#)

[Future Plans](#)

[About Jim](#)

[About Jim 3](#)

[About Jim 4](#)

[About Jim 5](#)

[Museum #1 Closes](#)

[About Jim 2](#)

[About Jim 6](#)

[My Movie Idea](#)

[Synopsis](#)

[My Movie Idea 2](#)

[Star Wars](#)

[Star Trek](#)

[A Serious Message](#)

[Harry Anderson](#)

[Carl Sagan](#)

[Sandra's Page](#)

[The 10 Commandments](#)

[News & Views](#)

[Contact Us](#)

# PINKOSKI.COM

## Main Menu

[Home](#)

[Banking Solution](#)

[The Real Mt. Sinai](#)

[Red Sea Crossing](#)

[Sodom & Gomorrah](#)

[Ark of the Covenant 1](#)

[Ark of the Covenant 2](#)

[AoC Flyer](#)

[Noah's Ark](#)

[Pyramid Machine](#)

## Sodom & Gomorrah

# The Ashen Remains of

# Sodom & Gomorrah

# HAVE BEEN FOUND!!!

## Wyatt Museums 1

- Museum #1 Closes
- Museum #2
- Museum #3
- Future Plans

## Ron Wyatt

- Newspaper Articles
- Ron Wyatt's Funeral
- A Serious Message

## About Jim, Part 1

- About Jim 2
- About Jim 3
- About Jim 4
- About Jim 5
- About Jim 6
- My Movie Idea
- Star Wars
- Star Trek

## Harry Anderson

## Carl Sagan

## Sandra's Page

## 10 Commandments

## News & Views

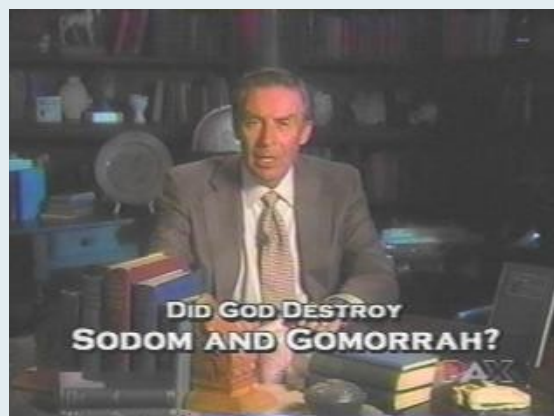
## Contact Us

## John Berkey Artwork

- Berkey Art Gallery

They are NOT located under the Dead Sea, THEY ARE RIGHT OUT IN THE OPEN! This amazing discovery was made by the late Ron Wyatt.

**IMPORTANT UPDATE:** This material was shown on national TV for the *very first time* on October 19, 2001 on the PAX TV program "*Encounters with the Unexplained*"! To see a transcript of this show go to: [www.arkdiscovery.com/sodom\\_&\\_gomorrah.htm](http://www.arkdiscovery.com/sodom_&_gomorrah.htm)



\* \* \*

**We have the SOLID PROOF!!**

**There are giant ashen structures at the Gomorrah site, plus millions of sulfur "death balls" embedded in the ashen area!**

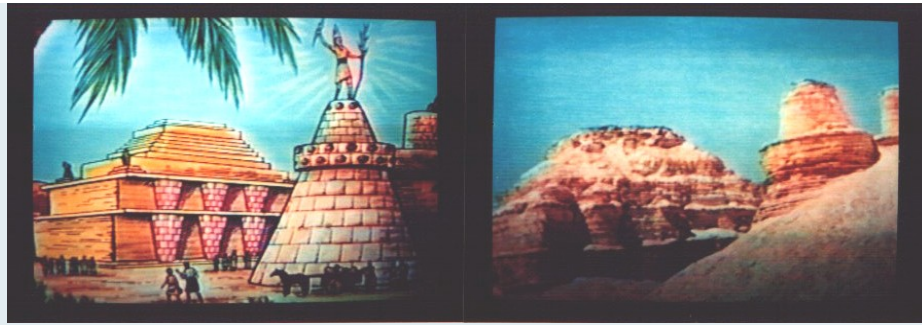
**Webster's Dictionary defines "brimstone" = SULFUR !!!**



**ABOVE: The view from Masada / Sulfur balls everywhere! /The remains of buildings!**



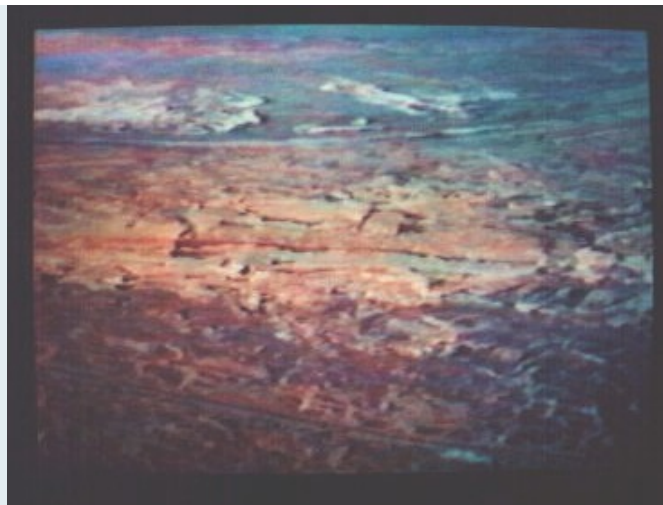
**ABOVE: The "walls" around the outside of this area perfectly match the walls of other ancient cities!**



**ABOVE & BELOW:** There are many formations in this area that look like they were once manmade! These are some of the reconstruction drawings I did for Ron Wyatt's 1992 S&G video.



Some people have said that this area at the base of Masada is only "geological" -- but would the receding of the Dead Sea leave behind **PERFECTLY SQUARE** sections like this one pictured above? Or what about this **GIANT RECTANGULAR PLATFORM-LIKE AREA** below?...



**The above diagram is of the pyramid complex at Sakarra, which shows that ancient peoples used this type of RECTANGULAR PLATFORM construction!**



There are the remains of SPHINXES ..... and ZIGGURATS in this area!



The sphinx-shape on the flatten platform area (with Masada in the background of the right photo).

---

**Josephus**



**The 1st century Jewish historian JOSEPHUS wrote: "There are still the remainders of that divine fire; and the traces of the five cities are STILL TO BE SEEN..." -- Wars of the Jews, book IV, chapter VIII.**

***And he's RIGHT! We CAN see these ashen remains!***



ABOVE: I did the reconstruction drawings that appear on Ron Wyatt's S&G video.



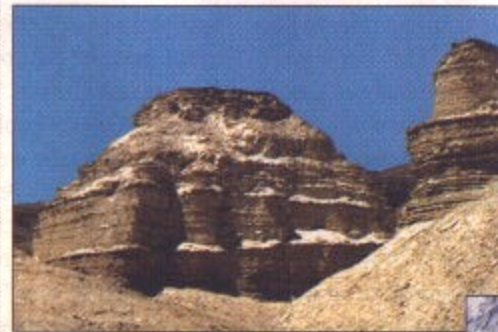
ABOVE: My 1994 photo of Ron Wyatt standing next to our Sodom & Gomorrah display in the Gatlinburg museum, and below is another view of our S&G sand sculpture.





---

Here is a portion of the write-up that appeared in the September 1999 issue of **CHARISMA** magazine:



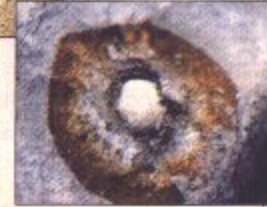
Evidence of a biblical disaster: Ashen formations near Masada (left) and sulfur balls (below) offer a silent warning.

## SODOM AND GOMORRAH FOUND?

■ Ten years have passed since archaeologist Ron Wyatt announced he had discovered the ancient

news has made little impact around the world.

Some Israeli tour buses will stop below



Embedded in the ruins are millions of pale yellow sulfur balls,

**This discovery was FRONT PAGE NEWS back in 1993:**

## Archaeologist: Sulfur proves I found Sodom



The sulfur balls — some golf-ball size — are the brimstone that destroyed Sodom and Gomorrah, Ron Wyatt says.

By **Charlie Appleton**  
Banner Chief State Writer

*"Then the Lord rained upon Sodom and upon Gomorrah brimstone and fire"*  
— Genesis 19:24

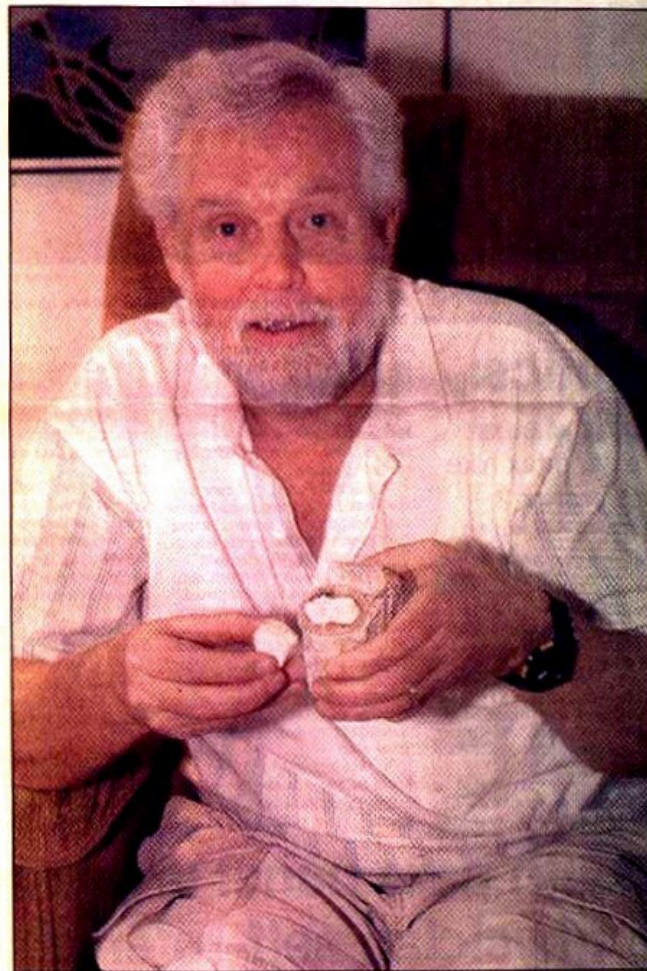
A Nashville man claims he has located Sodom and Gomorrah, the two cities lost 3,900 years ago when God destroyed them for their corruption.

Ron Wyatt, an amateur archaeologist who claimed in 1989 to have located Noah's Ark, is due to leave in mid-February for his seventh visit to the sites south and west of the Dead Sea in Israel.

Already, he says, lab tests have confirmed the presence of sulfur at the two sites like that found nowhere else in the world, and the Israeli government is in agreement with him that these are the sites of Sodom and Gomorrah.

The sulfur, which the dictionary defines as brimstone, is contained in round pellets — some the size of golf balls — that Wyatt says fell like rain on the cities, leaving pockmarks on the surfaces.

"I never intended to search for Sodom and Gomorrah, but one day in 1989 while working on another project in Israel, I was compelled to stop and examine some oddly shaped, whitish-colored formations along the



Banner photos by Stephanie Smartt

Amateur archaeologist Ron Wyatt of Nashville says these sulfur pellets rained

on Sodom and Gomorrah, leaving the cities' surfaces pockmarked.

western shore of the Dead Sea," Wyatt says.

The site he has identified as Sodom is located at the south end of the Dead Sea. Gomorrah is located along the western bank of the sea's midsection, he says.

The Nashville nurse-anesthetist, who once was abducted by Turkish guerrillas while searching for Noah's Ark, says he passed the sites 30 or 40 times in the past 12 years without realizing their shapes resembled city

walls, buildings and ziggurats (stepped pyramids used in pagan worship).

Finally pulling over, he discovered openings in the walls and what appear to be streets through a valley. The streets have buildings on each side and lead to side streets. Large piles of ash, however, make walking difficult, the Nashvillian says.

Please see SODOM, page A-2

## Sodom:

### Sulfur balls prove to be 95.7% pure in laboratory tests

■ Continued from page A-1

The ash is layered. This, Wyatt contends, is the result of thermal ionization that takes place when objects are burned at an extremely high temperature. Substances burned with sulfur leave an ash that is actually heavier than the original material, thus explaining how these buildings have survived for nearly 40 centuries, he says.

Some of the outer ash crumbles easily to the touch, he says, and many spots around the two cities show the effects of wind erosion. The brittleness makes exploration tedious and prevents the Tennessean and his crew, including his wife, Mary Nell Wyatt, from entering some of the buildings.

Wyatt also is convinced that several large outcroppings are the remains of ziggurats. He believes they were used in the promiscuous worship rites that brought God's wrath down on the two cities.

"It was this behavior that caused God to destroy them with fire and brimstone," he says with conviction.

Several of the outcroppings also look like the remains of sphinxes, he says.

But it is the sulfur that most

fascinates Wyatt and convinces him that he has found the two doomed cities.

"When the burning sulfur rained down upon the cities, everything was set ablaze. As the cities burned, these balls of flaming sulfur were smothered out by the ash remains.

"A capsule was formed around the remaining sulfur which preserved it all these years," he explains.

The substance from these capsules has proven to be 95.7 percent sulfur in tests conducted at Galbraith Laboratories in Knoxville.

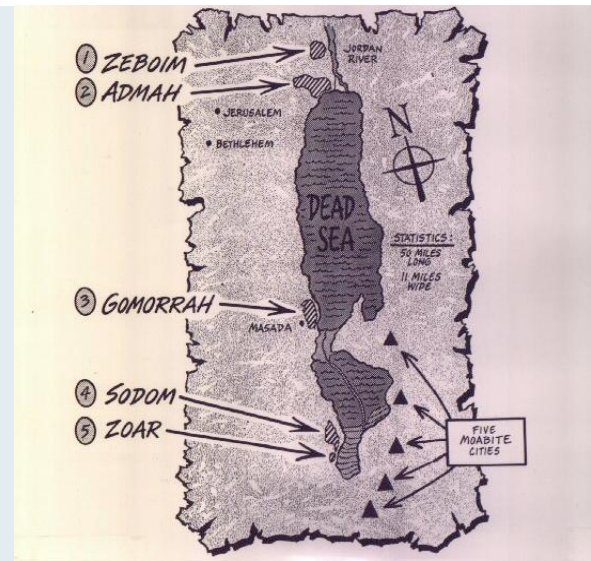
Like nowhere else in the world, the sulfur from these capsules was ball shaped. "This is an indication that it passed through the atmosphere," Wyatt says.

When Wyatt returns next month to continue his exploration, he will be using electronics "to locate some empty rooms and that sort of things." He hopes some of them contain furniture and decorative items.

"We have a subsurface interface radar system that we used on Noah's Ark. We want to use that to look for uncollapsed chambers and that sort of thing.

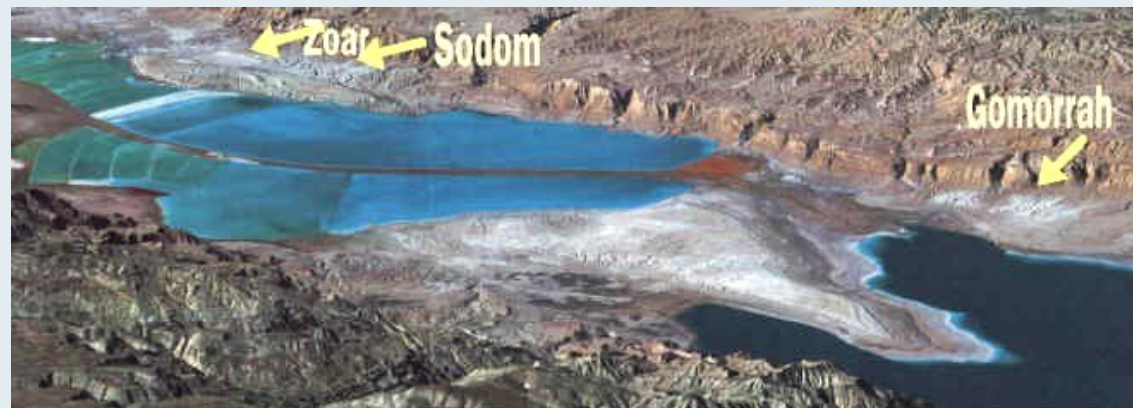
"What we also have is fiber optics. When we locate these chambers below the surface, we will bore a hole about an inch in diameter and then introduce these fiber optics with a light source, and that will give us the ability to video and photograph the interior of these chambers."

## The Locations of the 5 Cities of the Plain:



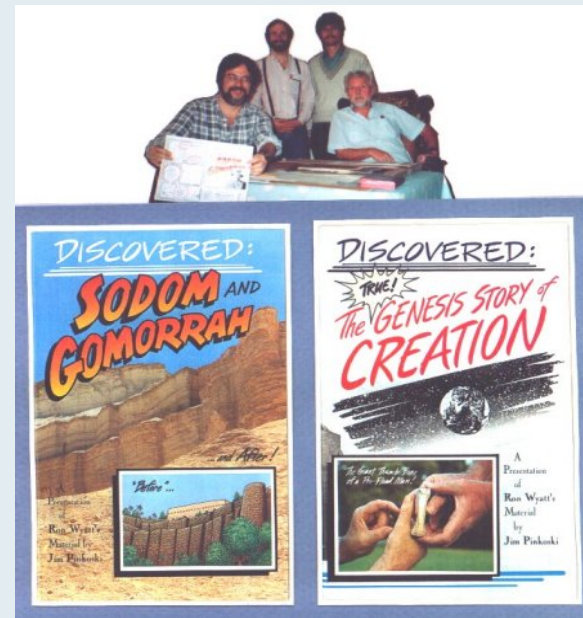
**ABOVE:** This map shows the locations of the 5 cities of the plain --this map appears in the *Discovered: Sodom & Gomorrah* magazine that I did for Ron Wyatt.

**BELOW:** A 3-D photo map of the locations:





*Be sure to get a copy of the two magazines I did for Ron . . .*



**Ron Wyatt's S&G in B.A.R. Magazine!**



On August 27th, 1997 I submitted Ron Wyatt's Sodom & Gomorrah material to B.A.R. magazine -- I waited for 6 months --and I finally heard back from Steve Feldman, one of their editors, on February 25, 1998: *"Dear Jim -- Yes, we have the materials you sent us. We are not sure whether we will do anything with it, however. As you know, we cover the academic discipline of near eastern archaeology and we are generally very dubious about claims by non-professionals ..."*

Twelve months after I submitted the material to B.A.R., they finally published a review of Ron's Sodom & Gomorrah material on September 4th, 1998, in the Sept./Oct. 1998 issue of Biblical Archaeology Review.

I had honestly thought that these people would be PLEASED to see our material, but instead their comments and their review was sarcastic, contrary, and negative -- which shows me that they were really not interested in INVESTIGATING Ron's material, they were more interested in "putting down" Ron Wyatt and "arguing" about Ron's discoveries!

In the year 2000 the Swedish scientist Lennart Moller at the Karolinska Institute in Stockholm, Sweden published his 320-page book THE EXODUS CASE, and pages 37-47 deal with Ron Wyatt's Sodom & Gomorrah sites -- and in January 2004 Michael Rood aired his new TV show entitled "A ROOD AWAKENING" and he did an excellent job of showing our Sodom & Gomorrah material! With the recent media coverage of gay and lesbian marriages and the appointing of a gay bishop in the New Hampshire Episcopal church, it now becomes very important for everyone to know about this discovery of the ash remains of S&G! People need to understand that God is SERIOUS about homosexuality being a sin, no matter how "comfortable" some people may feel regarding it. Yes, God will always love us -- but he will still destroy sin and sinners in the Lake of Fire at the Judgment! He will weep as it happens, but sin cannot exist in the presence of a holy God. The destruction of Sodom & Gomorrah shows us that God is VERY SERIOUS about how He dislikes all sin.

---

**Illogical Criticisms -- the Sulfur Balls prove that our sites are "not" Sodom & Gomorrah??**

Some of the criticisms we have received over the years range from ludicrous to totally absurd -- and there have even been some people who have actually had the audacity to say that the sulfur balls prove that our site "cannot" be Sodom & Gomorrah! What is their reasoning for this? They point out that sulfur melts and evaporates at "a lower temperature" than various things like marble burn at, so the fire that burned S&G would have "burned up" all the sulfur balls --so they say that finding the sulfur balls actually proves that the site is NOT the site!

**OUR REPLY TO THIS:** Some of the sulfur balls continued to rain down upon the ashened cities AFTER in initial super-hot fire storm burned up everything, and those sulfur balls embedded themselves into the soft ash -- they were cut off from the oxygen and stopped burning --and they were preserved in the ashen layers!

The Bible says that God used "FIRE AND BRIMSTONE" to destroy Sodom & Gomorrah, and that means that it is 100% logical for us to find the SULFUR BALLS embedded in these ashen remains, and that is exactly what we have found!

---

### The "ASH" Tests



A number of people have also decided to "challenge" us about the large amounts of ash in this area -- which caused us to revisit these sites and take more samples and do more lab tests. The Swedish scientist Lennart Moller did this in 1999-2000 and has published the results of his tests in his new book "The Exodus Case" on pages 37-47.

These tests are very complicated, and I myself am NOT a scientist -- but Lennart Moller is a very dedicated and dilligent genetic scientist who works at the Medical University of Stockholm, and I am sure that his lab tests on



the sulfur balls and the ash are very thorough! He says that the ash-like substance in the area consists of a mixture of limestone, dolomite and gypsum, plus a high proportion of fine-grained sulfur-- and he also found melted iron and a partially cremated skeleton in the area, all of which he documents in his book, which I quote:

"All the analysis were carried out with X-ray crystallography, liquid chromatography and atom absorption spectrophotometers by qualified geological and analytical laboratories ... The results from this analysis mean that one can explain in simple chemical terms what is most likely to have happened in this place ... CO<sub>2</sub> (carbon dioxide) is released from CaCO<sub>3</sub> (the limestone) under intensive heat (in this case burning sulfur). At the same time the sulphur (S) is oxidized to sulphur dioxide (SO<sub>2</sub>), which reacts with water to form sulphate (SO<sub>4</sub><sup>2-</sup>). The calcium ion (Ca<sup>2+</sup>) can then react with the sulphur ion (SO<sub>4</sub><sup>2-</sup>) and form calcium sulphate (CaSO<sub>4</sub>). Calcium sulphate is what we call gypsum. Analyses of the dominating mineral in this area show that it is gypsum." --Page 41

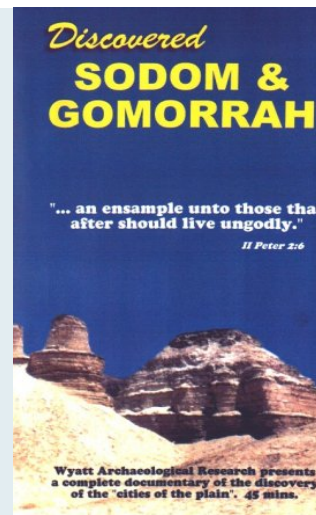
**The tests on the "ash" prove that it is ASH!**



ABOVE: My wife Sandra hold Lennart Moller's 320-page book "**The Exodus Case**" -- it is available in the USA from <http://www.anchorstone.com/> in Florida, or from Sweden at this website: [www.leocordia.com/exodus/](http://www.leocordia.com/exodus/) (or check on Amazon.com)

---

**Order Ron Wyatt's Video Today !**



**Ron Wyatt's 45-min Sodom & Gomorrah video is available from WYATT ARCHAEOLOGICAL RESEARCH for \$25 -- contact their museum at (931)293-4745 or call toll-free 1-877-992-8865!**

**For more information and photos of the Sodom and Gomorrah discoveries, please visit the W.A.R. Museum website at <http://www.wyattmuseum.com/> or visit these other websites:**

<http://www.anchorstone.com/>

<http://www.arkdiscovery.com/>

<http://www.discovered.net/>

<http://www.biblerevelations.org/>

[www.bibleplus.org/discoveries/discoveries.htm](http://www.bibleplus.org/discoveries/discoveries.htm)

(c) 2000, Jim Pinkoski. Jim's photos and text are the protected private property of Jim Pinkoski. It is offered freely for your review on this web site, however, any reproduction of further use of any text or images contained in this material must be done only with prior written consent of Jim Pinkoski.



**RocketTheme**

© Copyright 2008, All Rights Reserved