



[See full-size image.](#)

www.anatomyatlases.org/.../images/plate35.jpg

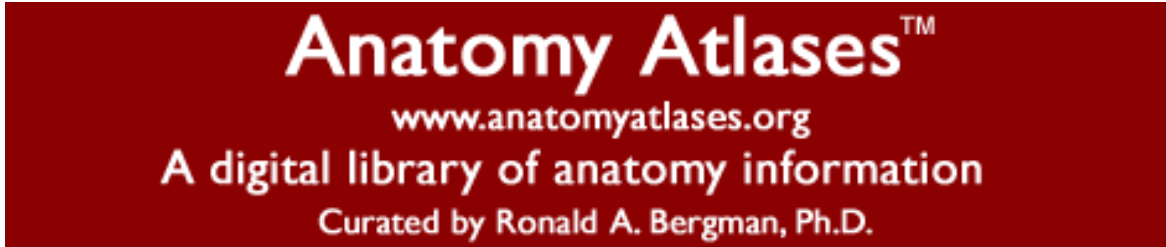
381 x 500 pixels - 52k

Image may be scaled down and subject to copyright.

[Remove Frame](#)

[Image Results](#) [»](#)

Below is the image in its **original context** on the page: www.anatomyatlases.org/.../plate35/index.shtml



[Home](#) | [Search](#) | [About Us](#) | [FAQ](#) | [Reviews](#) | [Contact Us](#)

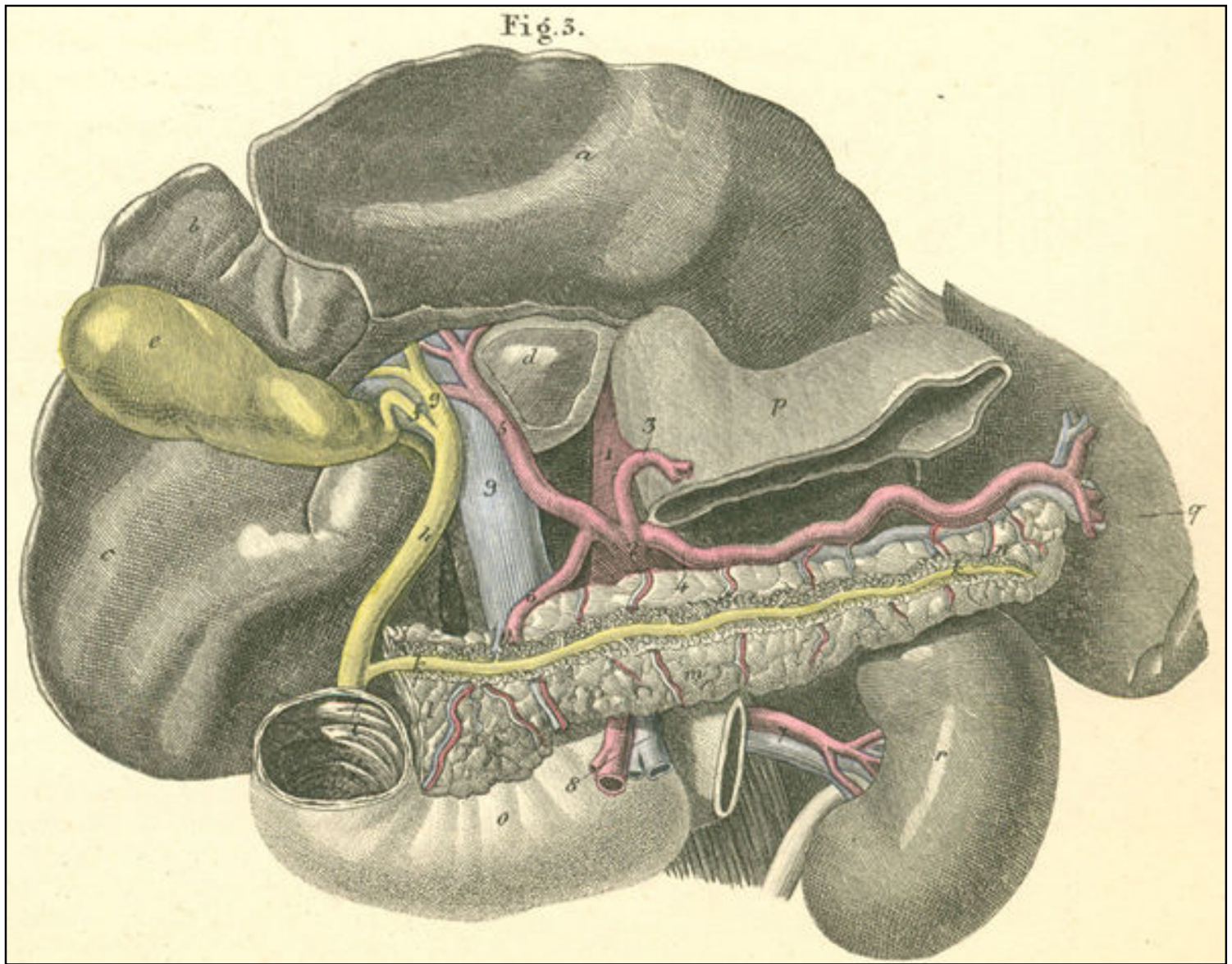
Atlas of Human Anatomy

Liver, spleen and pancreas with their blood supply.

Translated by: Ronald A. Bergman, PhD and Adel K. Afifi, MD, MS

Peer Review Status: Internally Peer Reviewed

[Magnified View \(via Quicktime VR\)](#)



- a) Liver, left lobe.
- b) Liver, quadrate lobe.
- c) Liver, right lobe.
- d) Liver, caudate lobe (s. Spigelli).
- e) Gallbladder.
- f) Cystic duct.
- g) Hepatic duct.
- h) Bile duct (s. ductus choledochus).
- i) Duodenum, pars descending, with the junction of the ductus choledochus and
- k) Pancreatic duct (s. Wirsungianus).
- l) Pancreas, head.
- m) Pancreas, body.
- n) Pancreas, tail.
- o) Duodenum, pars inferior, horizontal.
- p) Stomach, body (cut across).
- q) Spleen (s. lien).
- r) Left kidney, (s. Ren).

1. descending abdominal aorta.
2. celiac artery (s. triplus Hallerii).
3. left gastric artery (s. coronaria ventriculi sinistra).
4. splenic artery with pancreatic branches.
5. hepatic artery.
6. gastroduodenal artery.
7. Renal artery and vein.
8. superior mesenteric artery and vein.
9. portal vein.

[Plate Index](#) | [Title Page](#)

[Home](#) | [Search](#) | [About Us](#) | [FAQ](#) | [Reviews](#) | [Contact Us](#)

Anatomy Atlases is curated by Ronald A. Bergman, Ph.D.

Please send us comments by filling out our [Comment Form](#).

All contents copyright © 1995-2006 the Author(s) and Michael P. D'Alessandro, M.D. All rights reserved.

"Anatomy Atlases", the Anatomy Atlases logo, and "A digital library of anatomy information" are all Trademarks of Michael P. D'Alessandro, M.D.

Anatomy Atlases is funded in whole by Michael P. D'Alessandro, M.D. Advertising is not accepted.

Your personal information remains confidential and is not sold, leased, or given to any third party be they reliable or not.



We comply with the HONcode standard for [health trust worthy information](#): [verify here](#).

The information contained in Anatomy Atlases is not a substitute for the medical care and advice of your physician. There may be variations in treatment that your physician may recommend based on individual facts and circumstances.

URL: <http://www.anatomyatlases.org/>

